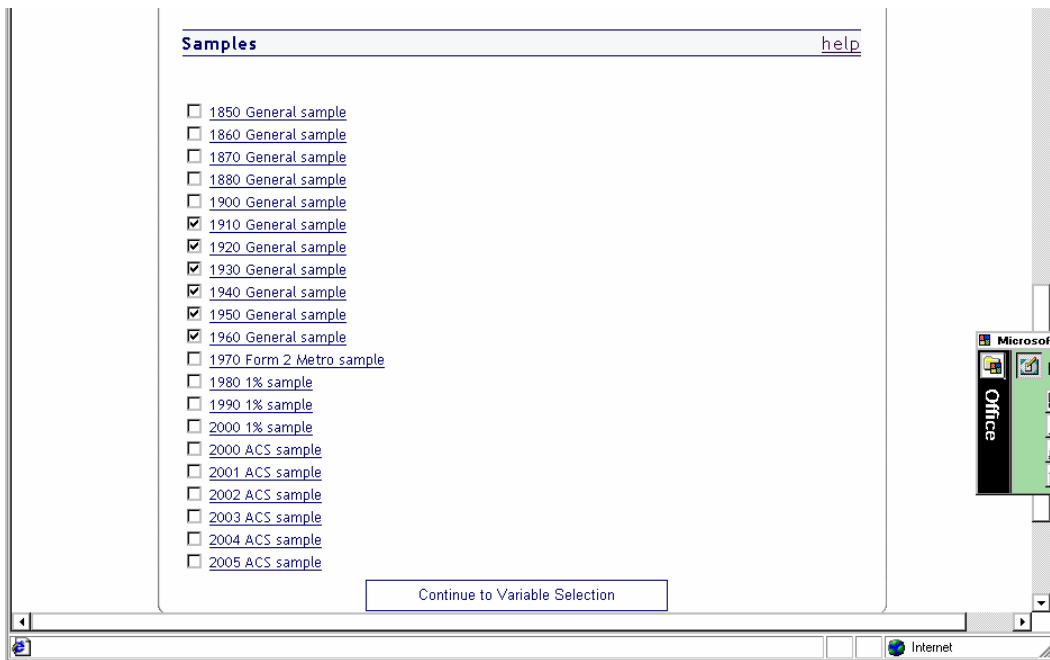
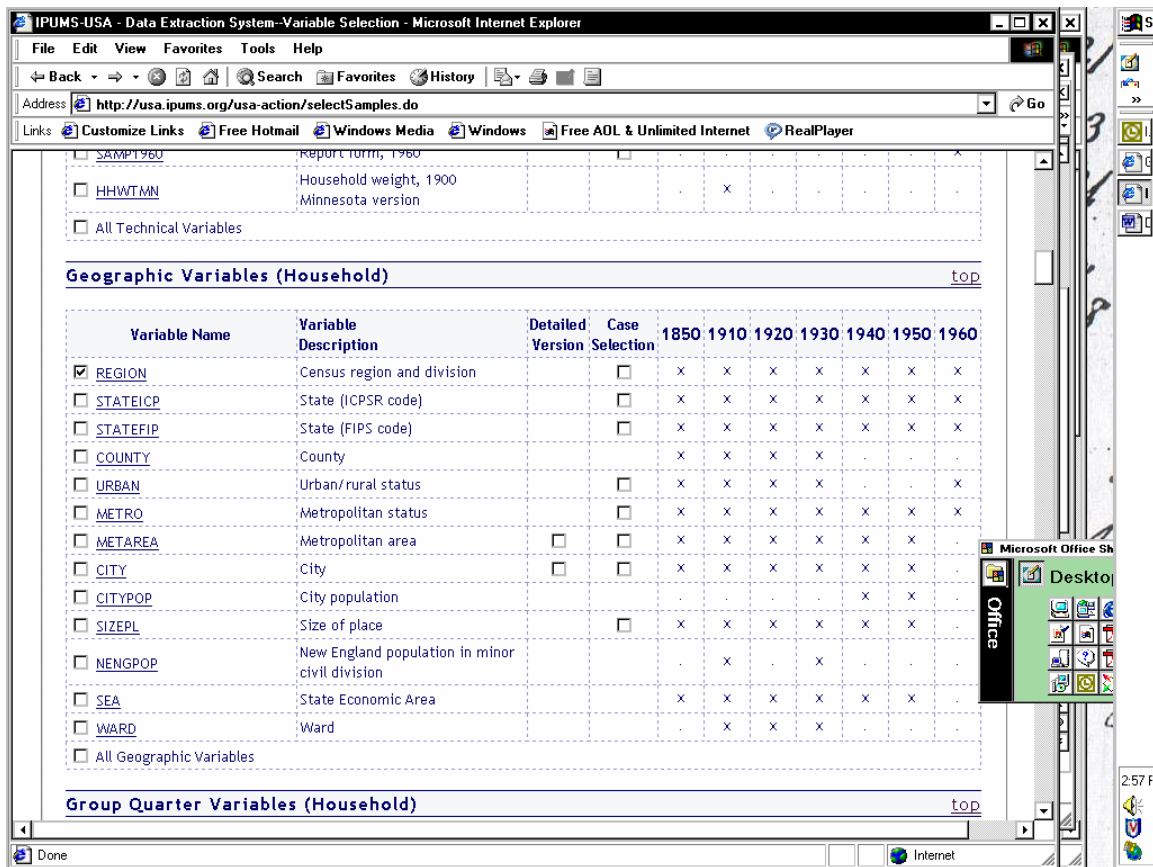


Creating and downloading an extract:

After you have logged in and selected your sample density (Tiny, Small, Regular, or Large), move on to the sample selection page. Don't change the default radio button settings for file type or format. Then tick the boxes for the sample years that you are interested in. Remember, the earlier census years 1850-1930 have fewer variables relative to the modern PUMS.



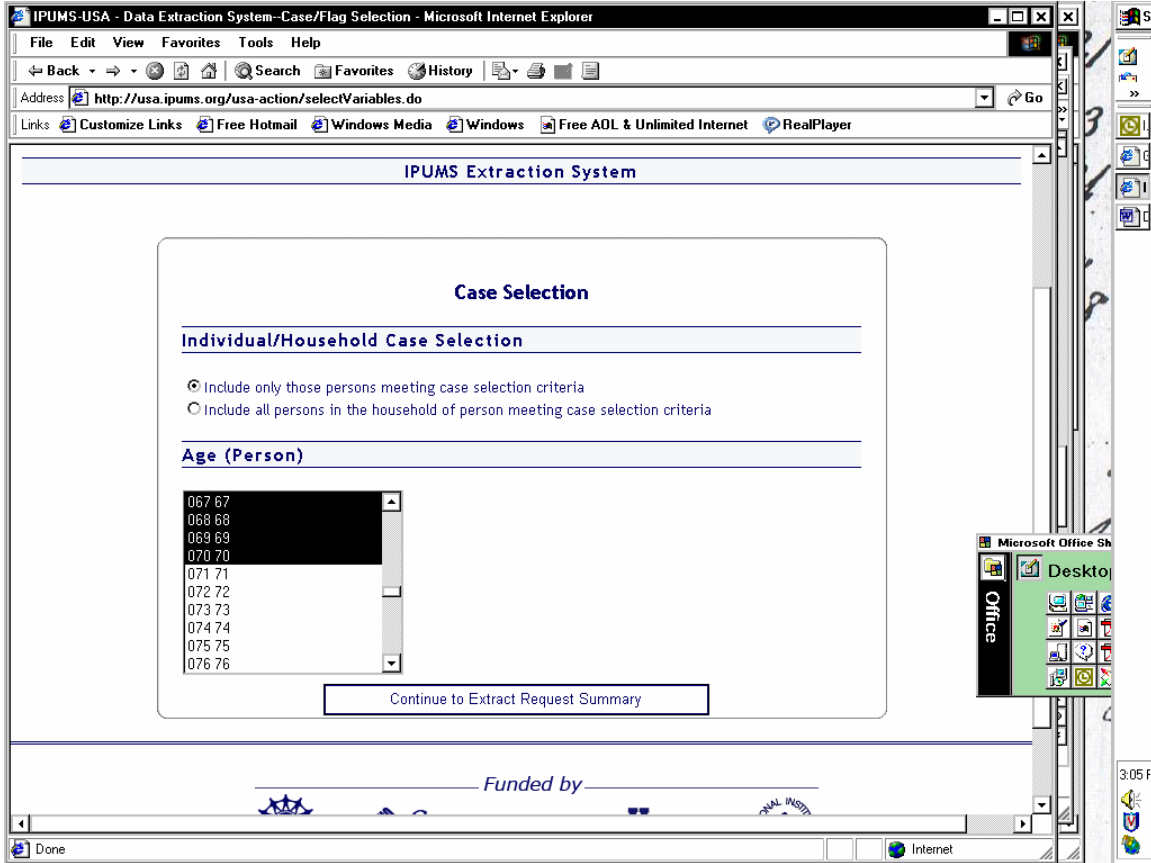
Then continue to the variable selection page. Remember, some variables are considered Household Records (H)--such as state, county, and farm--and others dealing with person-level characteristics are called Person Records. (P).



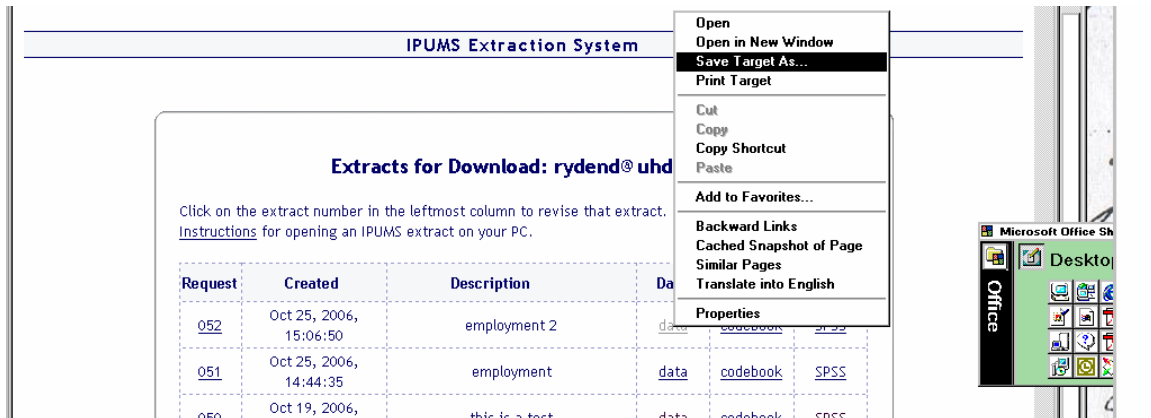
The first box gives you the option to select the variables you want to include in your study. The “Case Selection” column allows you to select only those cases/individuals that meet a specific constraint. For example, if you wanted to limit your study to a particular state, you would be sure to tick the case selection box in the row for State variable

Note that the “X” in the right hand portion of the table indicates if the variable is available for that particular year. County, for example, is not available for 1940- Present because of laws protecting privacy (the census manuscripts enter the public domain after ca. 70 years).

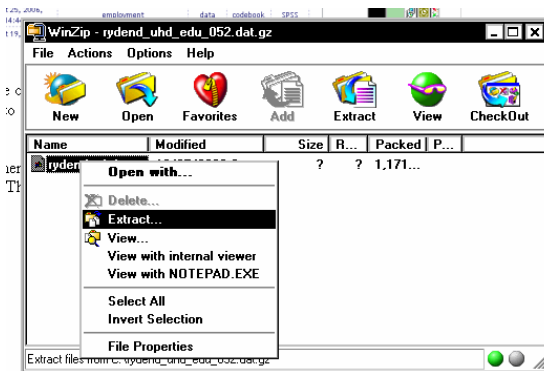
In this particular study, I wanted only working aged people in my extract. I arbitrarily decided that I would select only those cases between the ages of 16 and 70.



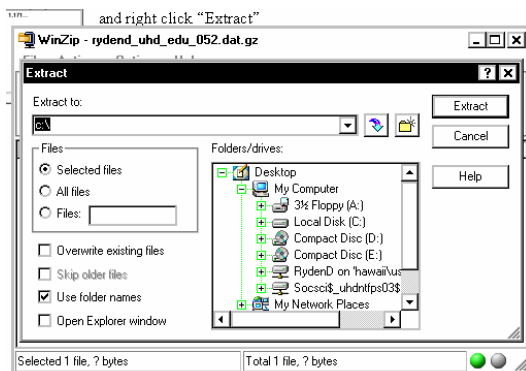
You will be notified via email that your extract is complete. When you point your browser to the download page, you will need to save the “Data” file and the “Command” (spss syntax file to your local disk). Simply right click on the data hyperlink, and select the “Save Target As” option.



Save the file anywhere on your local drive, but make note of the path. Then save the syntax/command file to the same subdirectory/folder.

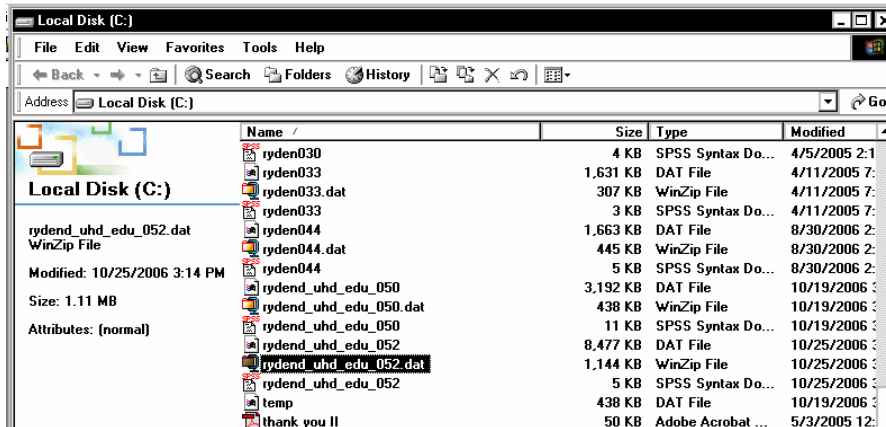


Go to the directory where the data and command files are located. Right click and select “open with Winzip.” Then, place the pointer over the file name and right click “Extract”



At this point, select “Extract” (make sure that you are aware of where the file is being extracted to ... that is check that the path is correct)

If you look at the file within your file manager, you will see a compressed and an uncompressed version of your file. The share nearly the same filename (different extension)



If you were to look at the “dat” file in a text viewer, you would see the raw underlying data....

Double Click on the syntax/command SPSS file to launch the program. Change the path, select the entire document, and click the play icon. If all goes well, the data should appear in the data window. If not, make sure the *Uncompressed* file is in the directory you specified.

